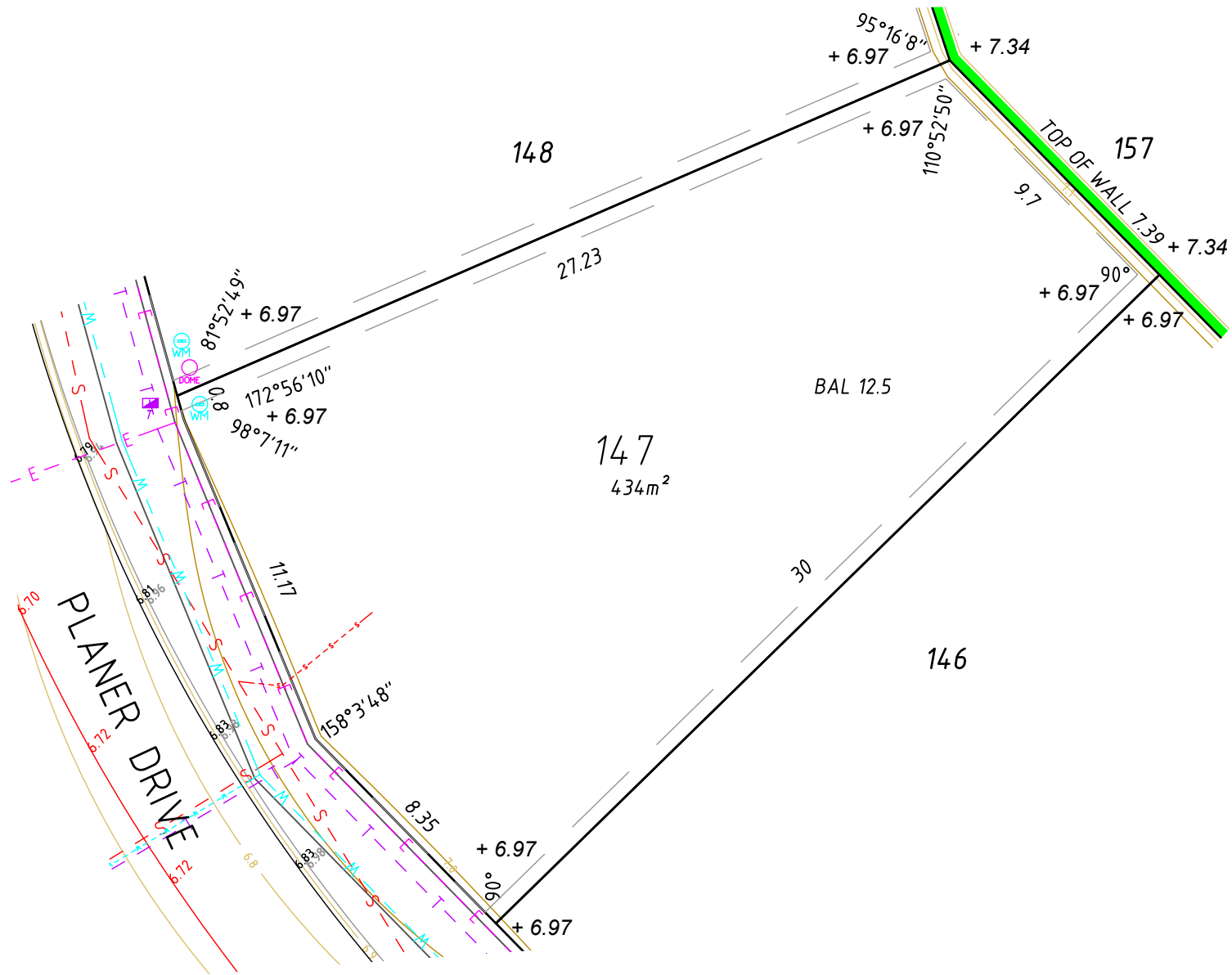


LEGEND

- KERB TOP
- KERB BOTTOM
- FOOTPATH
- █ RETAINING/PLINTH WALL
- - - PAD EXTENT
- - - E ELECTRIC CABLE U/G
- - - T TELECOM CABLE U/G
- - - W WATER PIPE U/G
- - - S SEWER PIPE U/G
- - - D DRAINAGE PIPE U/G
- - - SUBSOIL PIPE U/G
- BOUNDARY LINE
- ⊕ WATER METER
- (6.60) PAD LEVEL
- ⊕ DRAINAGE MANHOLE / STRUCTURE
- ⊕ SEWER MANHOLE
- ⊕ ELECTRIC LIGHT POLE
- ⊕ ELECTRIC DOME
- ⊕ TELECOM PIT OR BOX
- ⊕ WATER VALVE
- ⊕ WATER HYDRANT
- ⊕ SUBSOIL STRUCTURE



NOTES

The service and engineering information shown is from design drawings and should not be construed as being the "As-Constructed" details.

It is acknowledged that the dimensions and areas, as well as the location of services and the existence and width of easements are subject to change in accordance with the requirements of any relative Authority. The particulars of this plan are supplied for information only representing the facts at the time of printing and may change. The particulars shall not be taken as a representation in any respect on the Vendor or its Agent. Authorities should be consulted in relation to any limitations or requirements as building restrictions may apply.

SCALE 1:200



ALL DISTANCES ARE IN METRES

Survey Date: N/A Surveyed By: N/A
 Drawn Date: 02/10/2017 Drawn By: TVW
 Scale (A4): 1:200 Approved By: STP
 Hor Datum: PCG94 Vert Datum: AHD



WESTERN AUSTRALIA
 T 08 6241 3333
 veris.wa@veris.com.au
 www.veris.com.au



DEVELOP WITH CONFIDENCE™

DESIGN SITE PLAN

LOT 147
 PARKWAY RELEASE 1A
 MILLARS LANDING

⦿ This plan must not be reproduced without the permission of VERIS

Job No Item No Plan No Rev
21224 - 012 - 005 - 00

Sheet 1 of 1



Rev.	Description	Drawn	Date	App'd

Data File: VARIOUS
 CAD File: 171001_Millars_Landing_St1A_DSP_Master.dwg
 Path: W:\Projects\21\21224\04-Spatial\CG\DSP

Client: CEDAR WOODS