

# House & Land Package



Lot 133 | Lot Size 423m<sup>2</sup> | Frontage 11.23



## FERNLEIGH

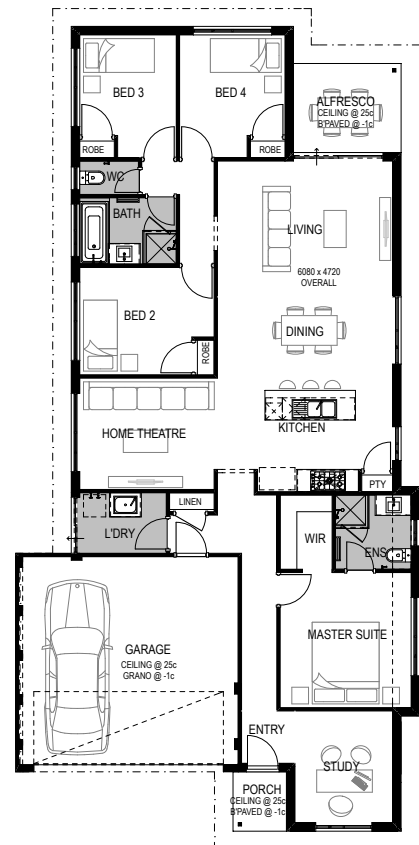
# \$358,400\*

Set on 423m<sup>2</sup> this home is designed for modern living for couples or young families and features:

- Premium Italian Smeg 900mm stainless steel appliances
- NatHERS 6 star energy rating as standard
- Floor tiles
- Lifetime structural warranty
- Window treatments
- CLIPSAL Iconic smart wiring - custom control lights via the wiser Room app.

For more information please contact

**Jatin Pithia**  
**0421 513 446** or  
**jatin@gohomes.com.au**



\*The builder is not the owner of the land, and has permission from Cedar Woods Properties Ltd to advertise the land for the price specified. Land prices and availability are subject to change without notice and do not include stamp duty, settlement fees, or any other disbursements required for settlement. Terms and conditions apply. All area and dimensions are subject to survey. Site costs quoted are allowances only and are subject to change on the basis of survey and engineer reports. The images displayed are for illustrative purposes only and may include some features, fixtures and landscaping not supplied as part of this package. To obtain details of the design specification, package inclusions, or alternate designs to suit this block please contact the builder. Design and specification are subject to compliance with developer's covenants. Price was correct at the time of printing (09/09/20) and the land was still available for sale. \*From price, includes \$10,000 First Home Owners grant which is available to eligible purchasers only.

